

VM600 Configuration Software

Configuration Software for VM600 Series Machinery Protection Systems (MPS)

FEATURES

- ▶ Graphical User Interface software allowing maximum ease of use
- ▶ Running under Windows 98/NT/2000/XP/2003 Server
- ▶ On-line Help information included
- ▶ Available in 3 languages (English, French, German)
- ▶ Delivered with instruction manual on CD-ROM (in PDF format)



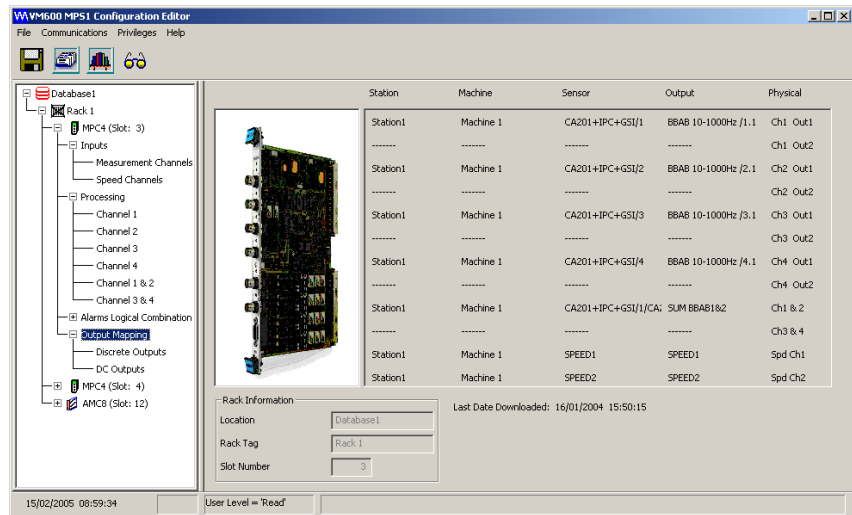
MPS application software splash screen

DESCRIPTION

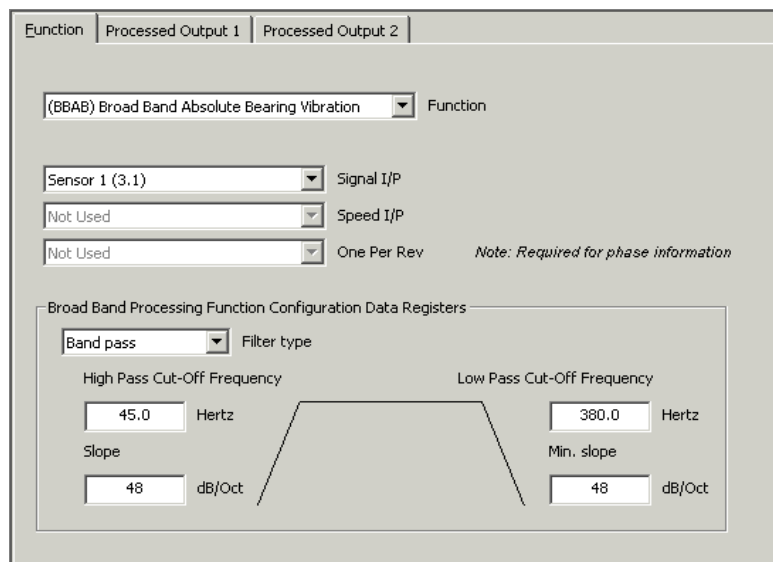
Vibro-Meter has developed two configuration software packages for use with the VM600 series Machinery Protection Systems (MPS). The packages run under Windows 98/NT/2000/XP/2003 Server and are menu-driven for ease of use.

MPS1 and **MPS2** allow stand-alone configuration of MPC 4 and AMC 8 cards, via the cards' serial connectors. Alternatively, if the cards are installed in a networked VM600 rack, i.e. one containing a modular CPU card (type CPU M) used for rack control and communication, they can be configured in "one-shot" mode using an Ethernet TCP/IP link from the PC to the CPU M.

All major parameters concerning the speed and vibration channels processed by the cards can be configured. This includes the input of sensor characteristics, the choice of the type of vibration monitoring to perform, the definition of measurement units, rectification types, alarm levels, etc.



Configuration screen for an MPC 4 card



Configuration screen for a processing channel

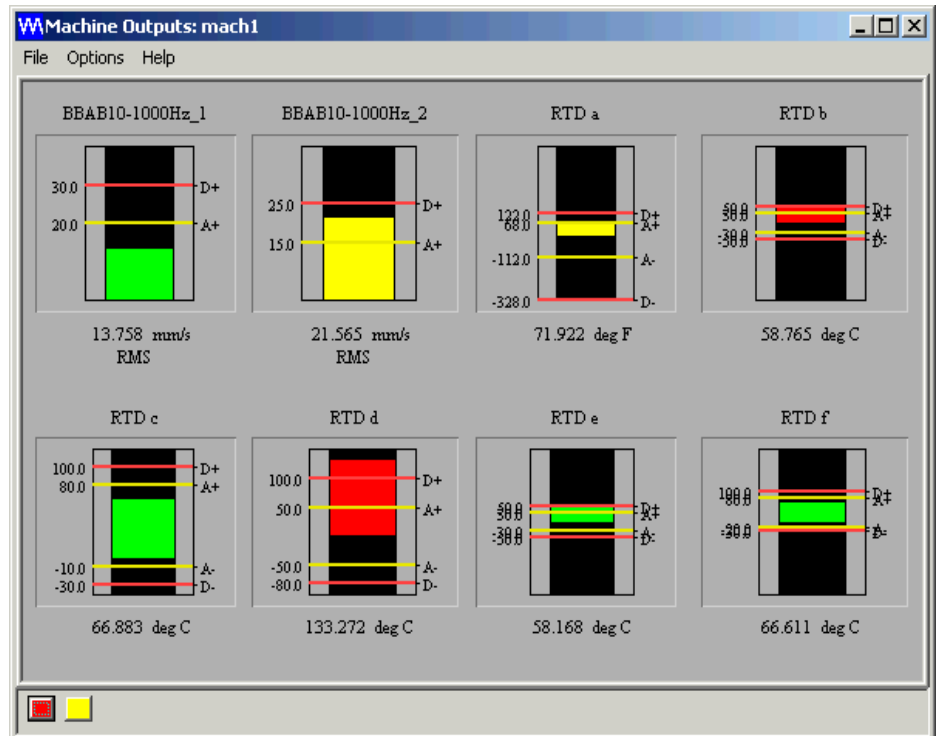
MPS2 is a configuration, visualization and trending package for MPC 4 and AMC 8 cards installed in a networked VM600 rack. It has the same configuration functionality as MPS1 plus additional data recording and display features. Data measured can be stored in a database and recalled later for trend analysis. Up to 50,000 data records can be stored using a cyclic 'first-in-first-out' method. The period of time that database records can cover depends on the data acquisition rate you have specified.

These features let you display a number of different charts showing the real-time display of sensor values or alternatively, graphs for trend analysis. The following charts can be displayed :

DESCRIPTION (Continued)

1. Bar chart (real-time values)

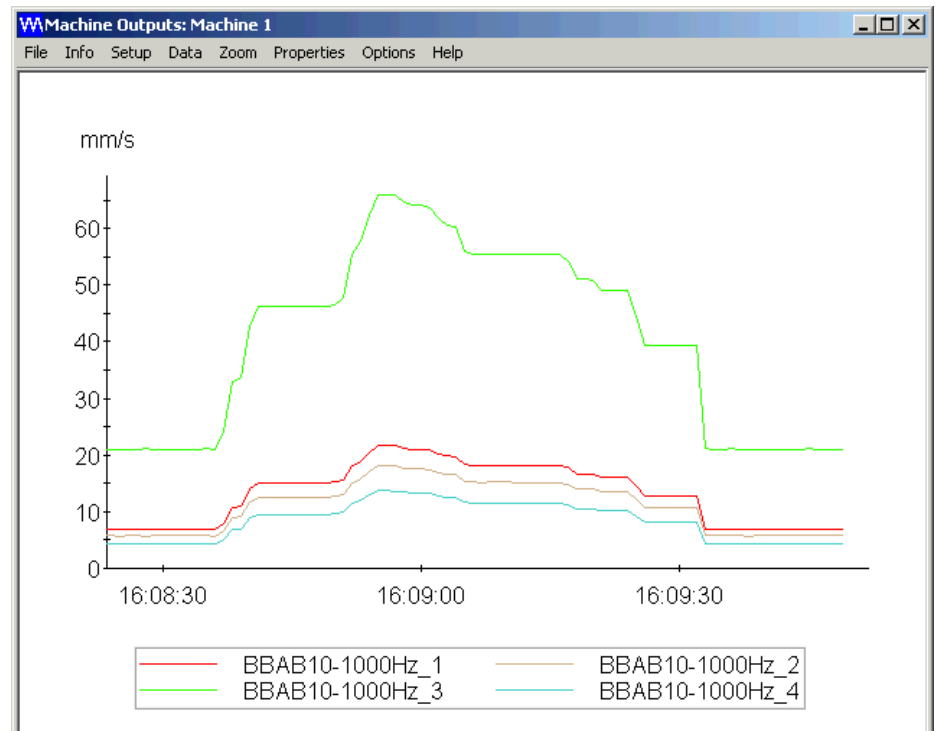
Up to 8 bars can be displayed per page. Direct access to other pages available. Status of all bars on all pages can be seen at a glance.



Bar charts showing real-time display of monitored signals

2. Strip chart (real-time values)

Up to 16 lines can be displayed per page. Direct access to other pages available. Status of all lines on all pages can be seen at a glance. Zoom facilities and print function available.



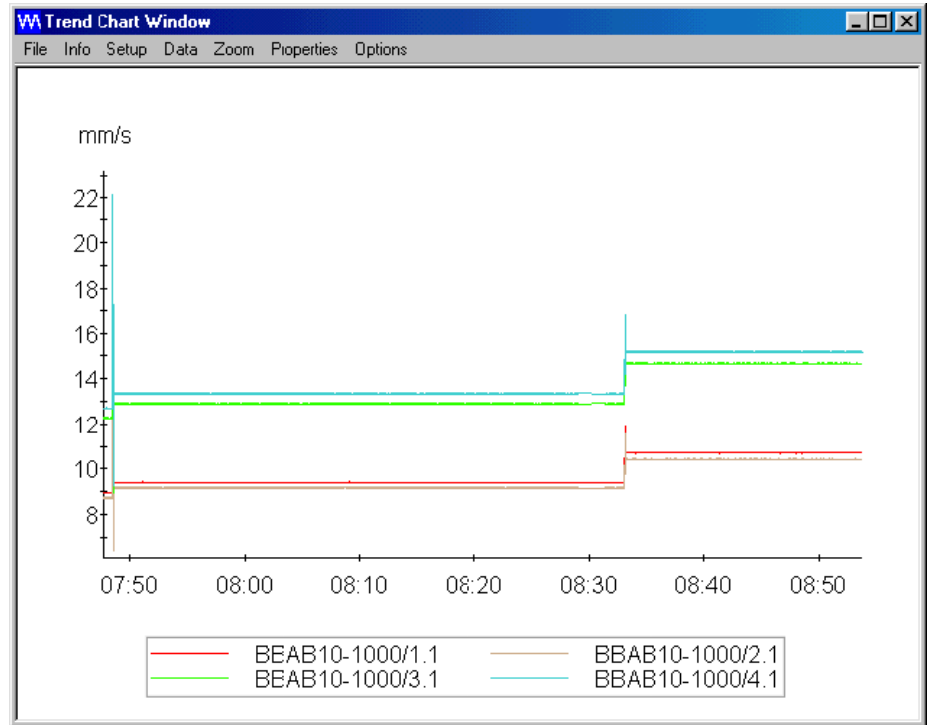
Strip charts showing real-time display of monitored signals

DESCRIPTION *(Continued)*

3. Trend chart (historic values)

Feature available for analysis of historic data acquired at the user's request.

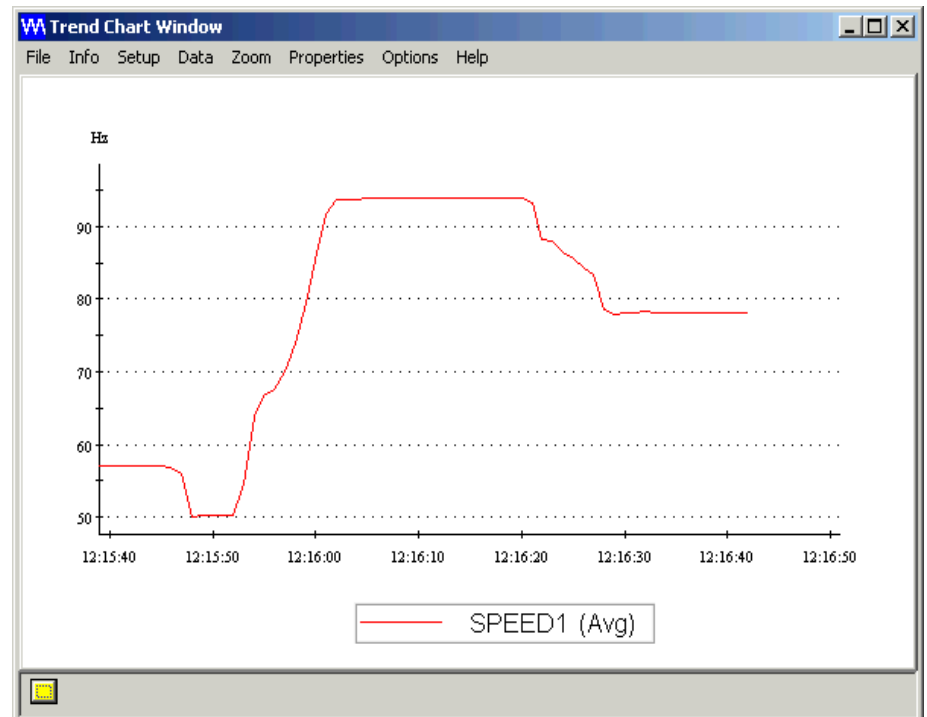
Up to 16 lines can be displayed. Zoom facilities and print function available.



Short term trend chart

4. Long-term (averages) trend chart

Up to 16 lines can be displayed. Zoom facilities, print function and data export facilities available



Long term (averages) trend chart

HARDWARE REQUIREMENTS

Minimum Computer Configuration

- 200 MHz, Pentium based personal computer
- 32 MByte memory
- 200 MByte hard disk space free
- CD-ROM drive
- VGA monitor
- One 9-pin serial port
- Ethernet port (TCP/IP)
- Windows 98/NT/2000/XP/2003 Server

Printer

- Any Windows compatible printer

ORDERING INFORMATION

To order please specify :

Type	Designation	Ordering Number
MPS1	Configuration Software for VM600 Protection System	209-500-100-SSs
MPS2	Configuration and Trending Software for VM600 Protection System	209-500-200-SSs

Note : "SSs" represents the firmware (embedded software) version.

When ordering please also specify:

Code 1 : 01=English, 02=French, 03=German (the language required)

Code 2 : n=number of copies (how many paper copies of the user manual you require)

Code 3: 00=MPC 1 not supported, 01=MPC1 supported

For example: 209-500-100-SSs /01 /03/ 00 would request: MPS 1 software in English, with 3 user manuals and a MPC 1 card is not supported.



In this publication, a dot (.) is used as the decimal separator and thousands are separated by spaces. Example : 12 345.678 90. Although care has been taken to assure the accuracy of the data presented in this publication, we do not assume liability for errors or omissions. We reserve the right to alter any part of this publication without prior notice.

Sales offices

Vibro-Meter has offices in more than 30 countries. For a complete list, please visit our website.

Your local agent

Head office

Vibro-Meter SA
Rte de Moncor 4
P.O. Box
CH-1701 Fribourg
Switzerland

Tel: +41 26 407 11 11
Fax: +41 26 407 13 01

www.vibro-meter.com

